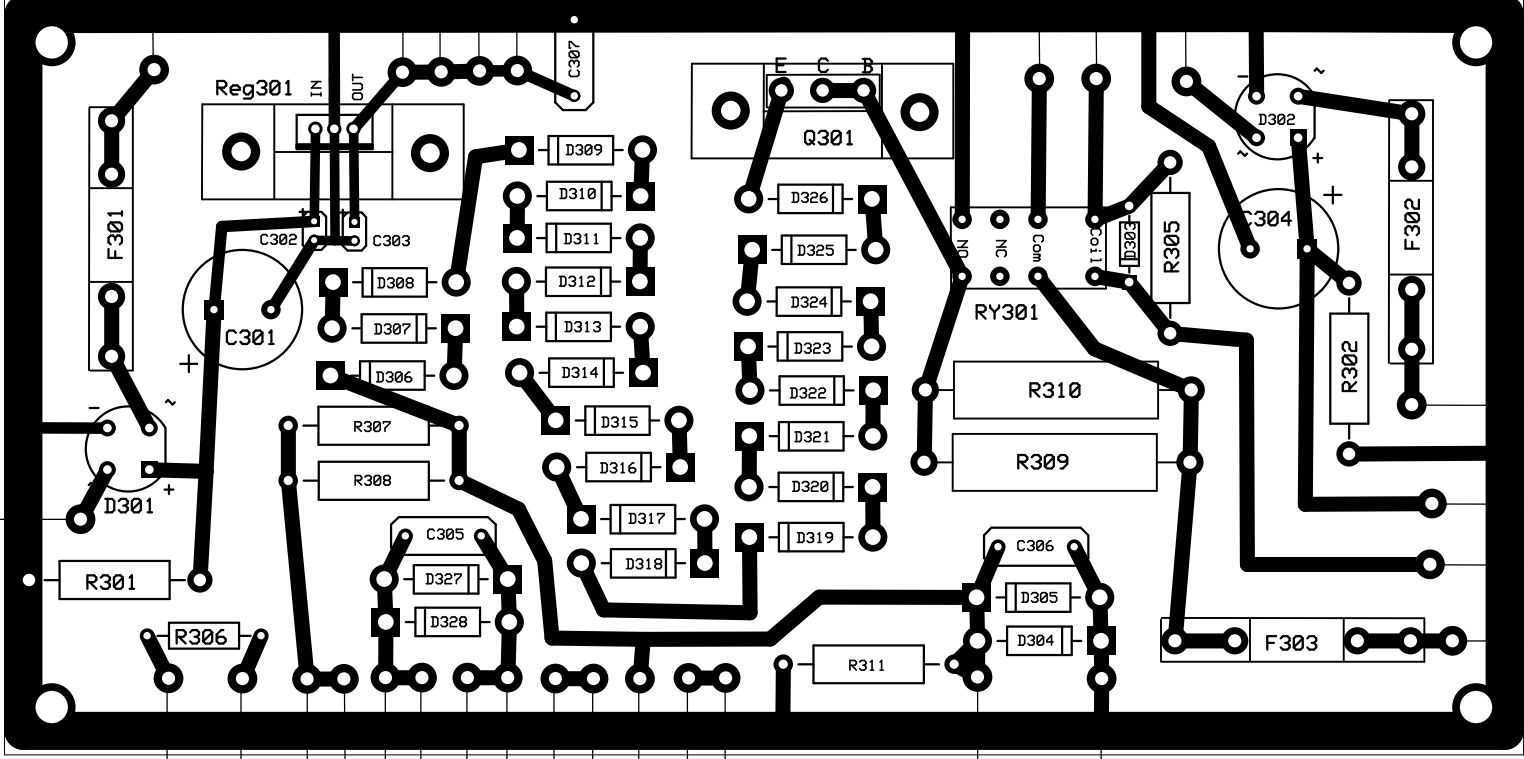


From T-1 Sec Org/Wht 24"



From ALC/PWR PCB Yel/Blk 36"

To Meter Switch PCB Purple 12"

From B- HV Diode PCB Wht 12"

To Meter Switch PCB Wht 12"

To Meter Switch PCB Red 12"

To + M-2 Multimeter Red 12"

To Meter Switch PCB Yellow 12"

To + M-2 Multimeter Yellow 12"

To Meter Switch PCB Wht/Org 12"

From ALC/PWR PCB Wht/Org 36"

To Meter Switch PCB Wht/Blu 12"

To Meter Switch PCB Blu 12"

From HV Diode PCB Blu 12"

To + M-1 Grid Meter Wht/Red 18"

To - M-1 Grid Meter Brn 18"

From T-1 Sec Org/Wht 24"

To Meter Switch PCB Org 18"

To RF I/O Switch PCB Org 36"

To TI BS Common Org 24"

To RF I/O PCB Org 36"

To Meter Switch PCB Grn 18"

To Opr/Stdby Switch Wht/Grn 18"

From T-1 Sec Brn/Wht 30"

From T-1 Sec Brn/Wht 30"

To Center Tap T-1 Sec Grn/Wht 27"

From R305 & R306 Wht/Pur 26"

To R305 & R306 Wht/Brn 24"